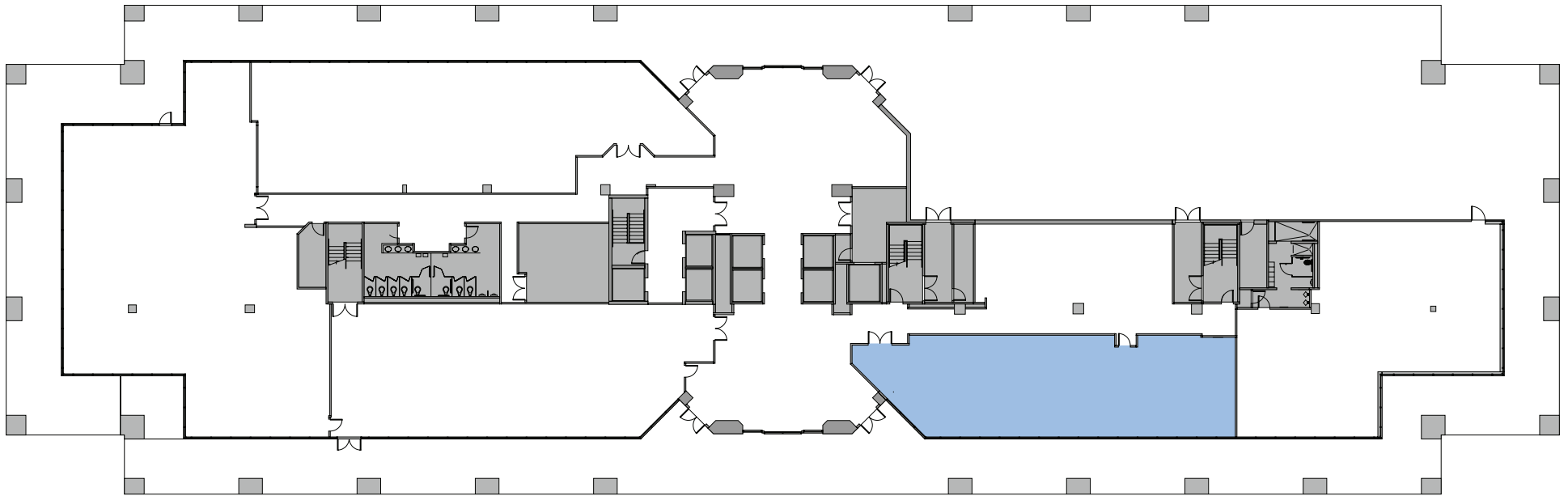


300 FOUR FALLS

WEST CONSHOHOCKEN, PA



First Floor | Suite 175 | 3,278 RSF | Available Now

Stephen J. Gersbach
First Vice President
+1 610 251 5138
steve.gersbach@cbre.com

Scott Gabrielsen
Executive Vice President
+1 610 308 5141
scott.gabrielsen@cbre.com

Nicholas J. Gersbach
Senior Vice President
+1 215 561 8945
nick.gersbach@cbre.com

Tyler Kopen
Associate
+1 610 256 4213
tyler.kopen@cbre.com

CBRE, Inc., 555 E. Lancaster Avenue, Suite 120, Radnor, PA 19087 | cbre.us/philadelphia | Licensed Real Estate Broker

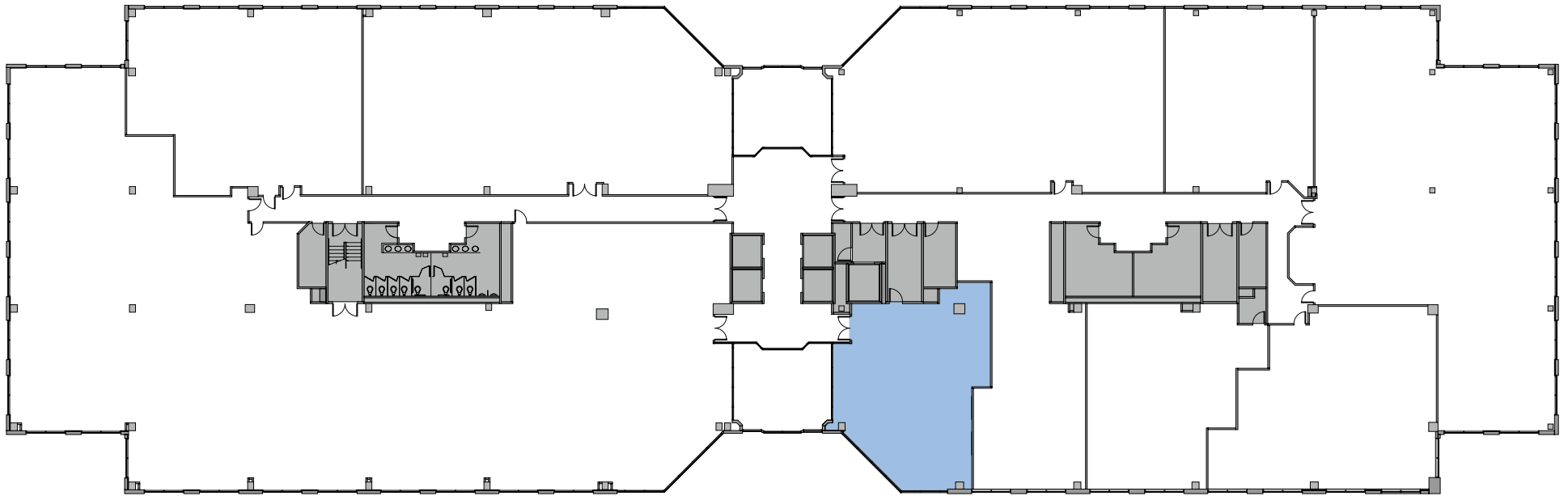
© 2023 CBRE, Inc. All rights reserved. This information has been obtained from sources believed reliable but has not been verified for accuracy or completeness. CBRE, Inc. makes no guarantee, representation or warranty and accepts no responsibility or liability as to the accuracy, completeness, or reliability of the information contained herein. You should conduct a careful, independent investigation of the property and verify all information. Any reliance on this information is solely at your own risk. CBRE and the CBRE logo are service marks of CBRE, Inc. All other marks displayed on this document are the property of their respective owners, and the use of such marks does not imply any affiliation with or endorsement of CBRE. Photos herein are the property of their respective owners. Use of these images without the express written consent of the owner is prohibited.

MAGUIRE
HAYDEN
REAL ESTATE COMPANY

CBRE

300 FOUR FALLS

WEST CONSHOHOCKEN, PA



Second Floor | Suite 245 | 2,254 RSF | Available Now

Stephen J. Gersbach
First Vice President
+1 610 251 5138
steve.gersbach@cbre.com

Scott Gabrielsen
Executive Vice President
+1 610 308 5141
scott.gabrielsen@cbre.com

Nicholas J. Gersbach
Senior Vice President
+1 215 561 8945
nick.gersbach@cbre.com

Tyler Kopen
Associate
+1 610 256 4213
tyler.kopen@cbre.com

CBRE, Inc., 555 E. Lancaster Avenue, Suite 120, Radnor, PA 19087 | cbre.us/philadelphia | Licensed Real Estate Broker

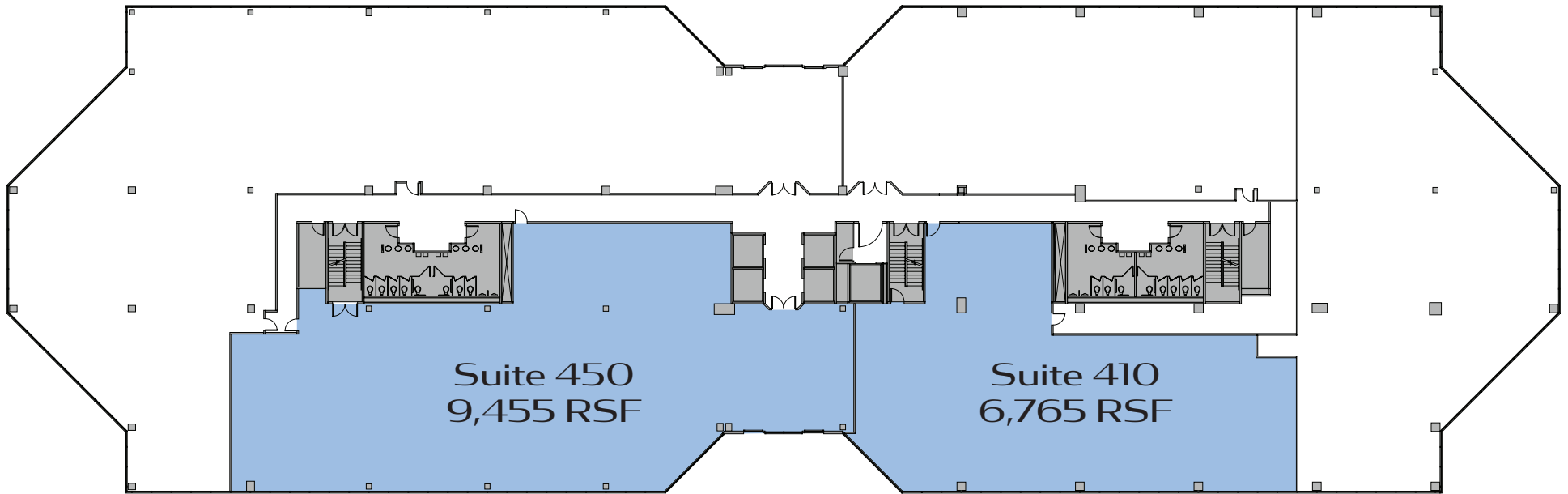
© 2023 CBRE, Inc. All rights reserved. This information has been obtained from sources believed reliable but has not been verified for accuracy or completeness. CBRE, Inc. makes no guarantee, representation or warranty and accepts no responsibility or liability as to the accuracy, completeness, or reliability of the information contained herein. You should conduct a careful, independent investigation of the property and verify all information. Any reliance on this information is solely at your own risk. CBRE and the CBRE logo are service marks of CBRE, Inc. All other marks displayed on this document are the property of their respective owners, and the use of such marks does not imply any affiliation with or endorsement of CBRE. Photos herein are the property of their respective owners. Use of these images without the express written consent of the owner is prohibited.

MAGUIRE
HAYDEN
REAL ESTATE COMPANY

CBRE

300 FOUR FALLS

WEST CONSHOHOCKEN, PA



Forth Floor | Combined Suites | 16,220 RSF | Available Now

Stephen J. Gersbach
First Vice President
+1 610 251 5138
steve.gersbach@cbre.com

Scott Gabrielsen
Executive Vice President
+1 610 308 5141
scott.gabrielsen@cbre.com

Nicholas J. Gersbach
Senior Vice President
+1 215 561 8945
nick.gersbach@cbre.com

Tyler Kopen
Associate
+1 610 256 4213
tyler.kopen@cbre.com

CBRE, Inc., 555 E. Lancaster Avenue, Suite 120, Radnor, PA 19087 | cbre.us/philadelphia | Licensed Real Estate Broker

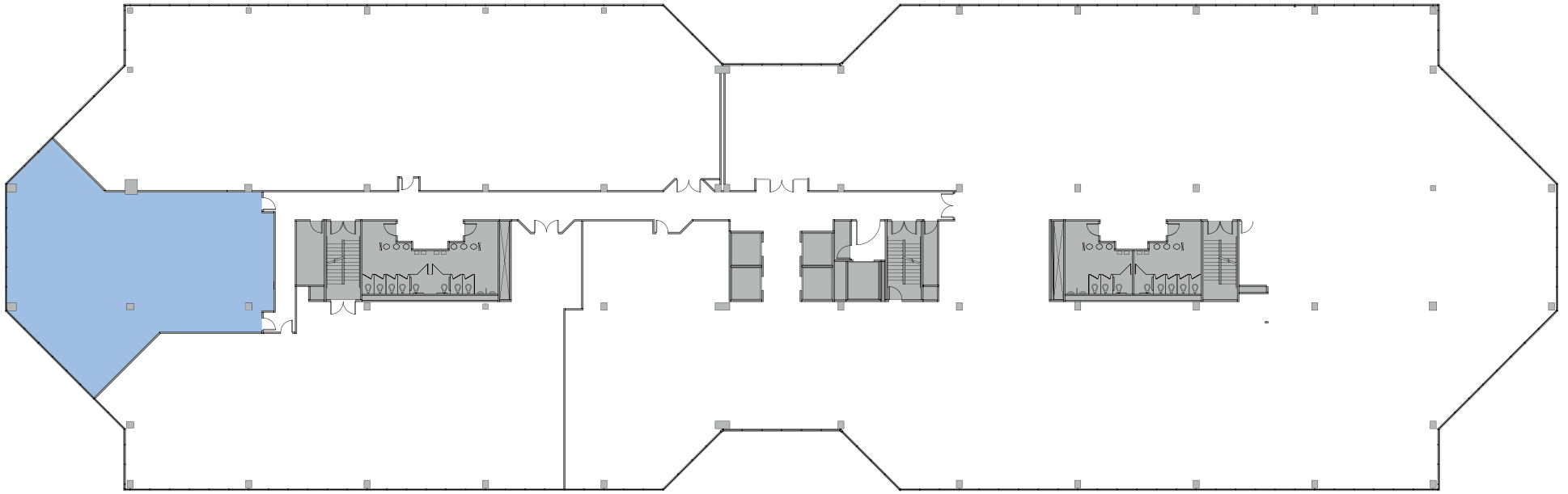
© 2023 CBRE, Inc. All rights reserved. This information has been obtained from sources believed reliable but has not been verified for accuracy or completeness. CBRE, Inc. makes no guarantee, representation or warranty and accepts no responsibility or liability as to the accuracy, completeness, or reliability of the information contained herein. You should conduct a careful, independent investigation of the property and verify all information. Any reliance on this information is solely at your own risk. CBRE and the CBRE logo are service marks of CBRE, Inc. All other marks displayed on this document are the property of their respective owners, and the use of such marks does not imply any affiliation with or endorsement of CBRE. Photos herein are the property of their respective owners. Use of these images without the express written consent of the owner is prohibited.

MAGUIRE
HAYDEN
REAL ESTATE COMPANY

CBRE

300 FOUR FALLS

WEST CONSHOHOCKEN, PA



Fifth Floor | Suite 580 | 2,942 RSF | Available Now

Stephen J. Gersbach
First Vice President
+1 610 251 5138
steve.gersbach@cbre.com

Scott Gabrielsen
Executive Vice President
+1 610 308 5141
scott.gabrielsen@cbre.com

Nicholas J. Gersbach
Senior Vice President
+1 215 561 8945
nick.gersbach@cbre.com

Tyler Kopen
Associate
+1 610 256 4213
tyler.kopen@cbre.com

CBRE, Inc., 555 E. Lancaster Avenue, Suite 120, Radnor, PA 19087 | cbre.us/philadelphia | Licensed Real Estate Broker

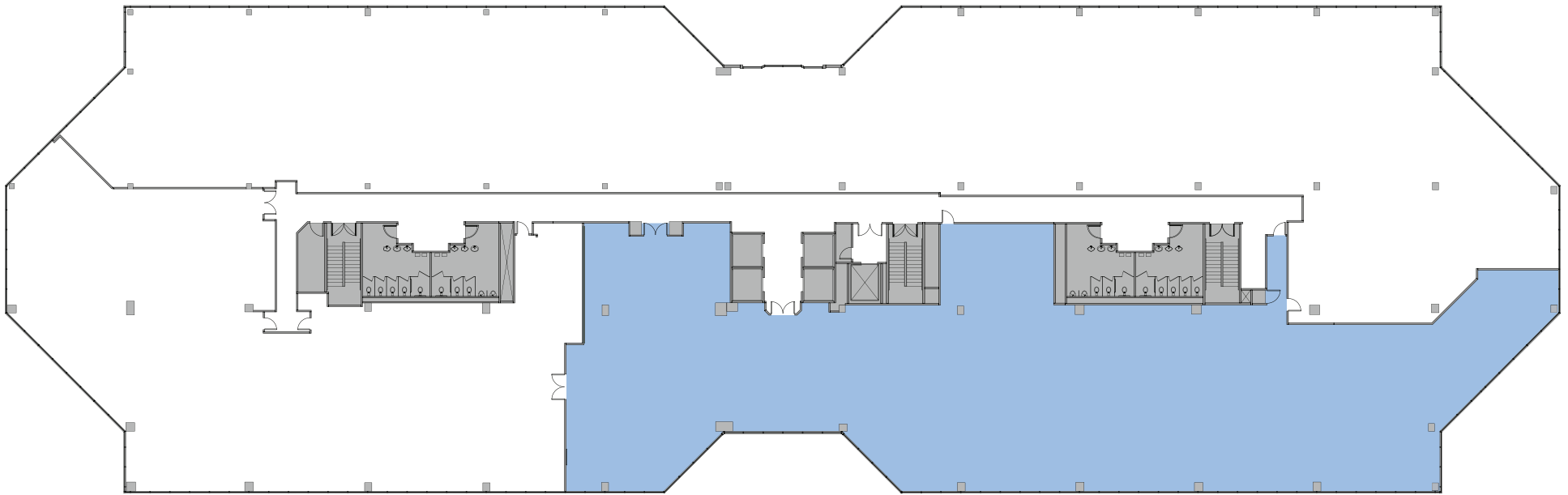
© 2023 CBRE, Inc. All rights reserved. This information has been obtained from sources believed reliable but has not been verified for accuracy or completeness. CBRE, Inc. makes no guarantee, representation or warranty and accepts no responsibility or liability as to the accuracy, completeness, or reliability of the information contained herein. You should conduct a careful, independent investigation of the property and verify all information. Any reliance on this information is solely at your own risk. CBRE and the CBRE logo are service marks of CBRE, Inc. All other marks displayed on this document are the property of their respective owners, and the use of such marks does not imply any affiliation with or endorsement of CBRE. Photos herein are the property of their respective owners. Use of these images without the express written consent of the owner is prohibited.

MAGUIRE
HAYDEN
REAL ESTATE COMPANY

CBRE

300 FOUR FALLS

WEST CONSHOHOCKEN, PA



Sixth Floor | Suite 650 | 14,651 RSF | Available Now

Stephen J. Gersbach
First Vice President
+1 610 251 5138
steve.gersbach@cbre.com

Scott Gabrielsen
Executive Vice President
+1 610 308 5141
scott.gabrielsen@cbre.com

Nicholas J. Gersbach
Senior Vice President
+1 215 561 8945
nick.gersbach@cbre.com

Tyler Kopen
Associate
+1 610 256 4213
tyler.kopen@cbre.com

CBRE, Inc., 555 E. Lancaster Avenue, Suite 120, Radnor, PA 19087 | cbre.us/philadelphia | Licensed Real Estate Broker

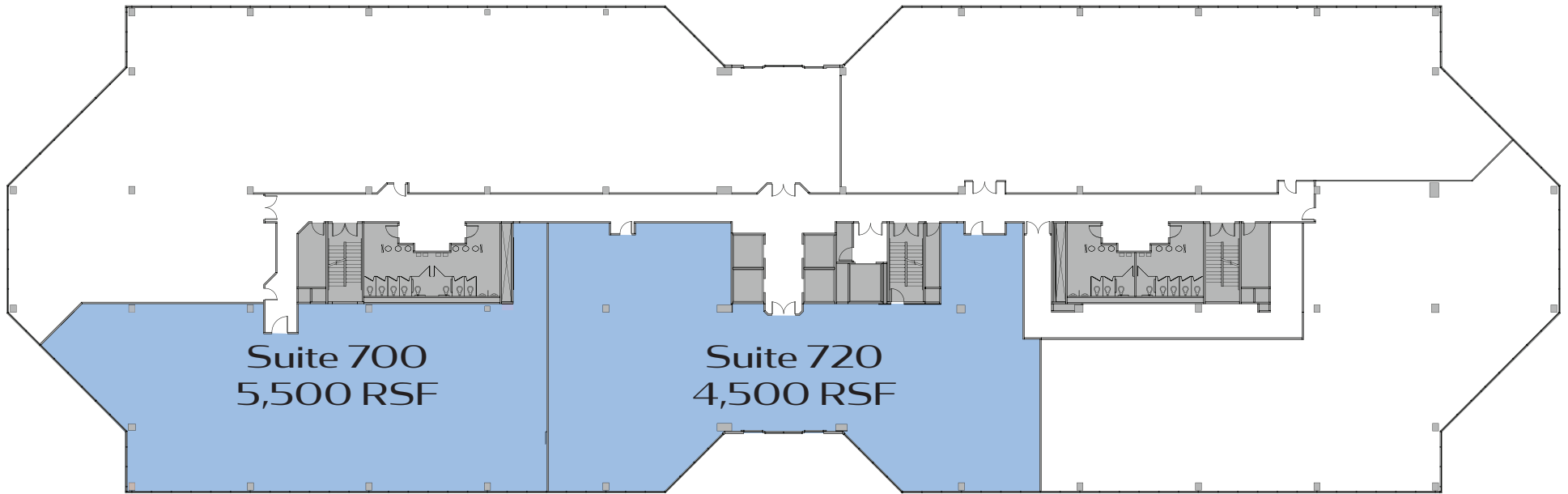
© 2023 CBRE, Inc. All rights reserved. This information has been obtained from sources believed reliable but has not been verified for accuracy or completeness. CBRE, Inc. makes no guarantee, representation or warranty and accepts no responsibility or liability as to the accuracy, completeness, or reliability of the information contained herein. You should conduct a careful, independent investigation of the property and verify all information. Any reliance on this information is solely at your own risk. CBRE and the CBRE logo are service marks of CBRE, Inc. All other marks displayed on this document are the property of their respective owners, and the use of such marks does not imply any affiliation with or endorsement of CBRE. Photos herein are the property of their respective owners. Use of these images without the express written consent of the owner is prohibited.

MAGUIRE
HAYDEN
REAL ESTATE COMPANY

CBRE

300 FOUR FALLS

WEST CONSHOHOCKEN, PA



Seventh Floor | Combined Suites | ±10,000 RSF | Available Now

Stephen J. Gersbach
First Vice President
+1 610 251 5138
steve.gersbach@cbre.com

Scott Gabrielsen
Executive Vice President
+1 610 308 5141
scott.gabrielsen@cbre.com

Nicholas J. Gersbach
Senior Vice President
+1 215 561 8945
nick.gersbach@cbre.com

Tyler Kopen
Associate
+1 610 256 4213
tyler.kopen@cbre.com

CBRE, Inc., 555 E. Lancaster Avenue, Suite 120, Radnor, PA 19087 | cbre.us/philadelphia | Licensed Real Estate Broker

© 2023 CBRE, Inc. All rights reserved. This information has been obtained from sources believed reliable but has not been verified for accuracy or completeness. CBRE, Inc. makes no guarantee, representation or warranty and accepts no responsibility or liability as to the accuracy, completeness, or reliability of the information contained herein. You should conduct a careful, independent investigation of the property and verify all information. Any reliance on this information is solely at your own risk. CBRE and the CBRE logo are service marks of CBRE, Inc. All other marks displayed on this document are the property of their respective owners, and the use of such marks does not imply any affiliation with or endorsement of CBRE. Photos herein are the property of their respective owners. Use of these images without the express written consent of the owner is prohibited.

MAGUIRE
HAYDEN
REAL ESTATE COMPANY

CBRE