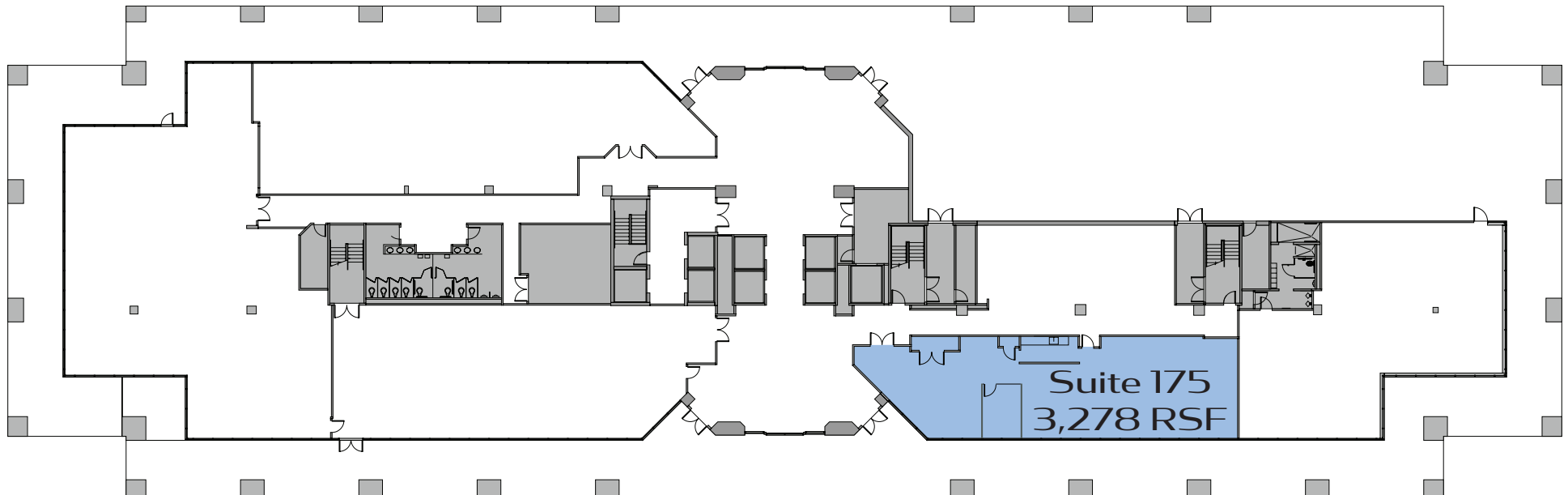


300 FOUR FALLS

WEST CONSHOHOCKEN, PA



FIRST FLOOR

3,278 RSF

AVAILABLE NOW

Stephen J. Gersbach
First Vice President
+1 610 251 5138
steve.gersbach@cbre.com

Scott Gabrielsen
Executive Vice President
+1 610 308 5141
scott.gabrielsen@cbre.com

Nicholas J. Gersbach
Senior Vice President
+1 215 561 8945
nick.gersbach@cbre.com

CBRE, Inc., 555 E. Lancaster Avenue, Suite 120, Radnor, PA 19087 | cbre.us/philadelphia | Licensed Real Estate Broker

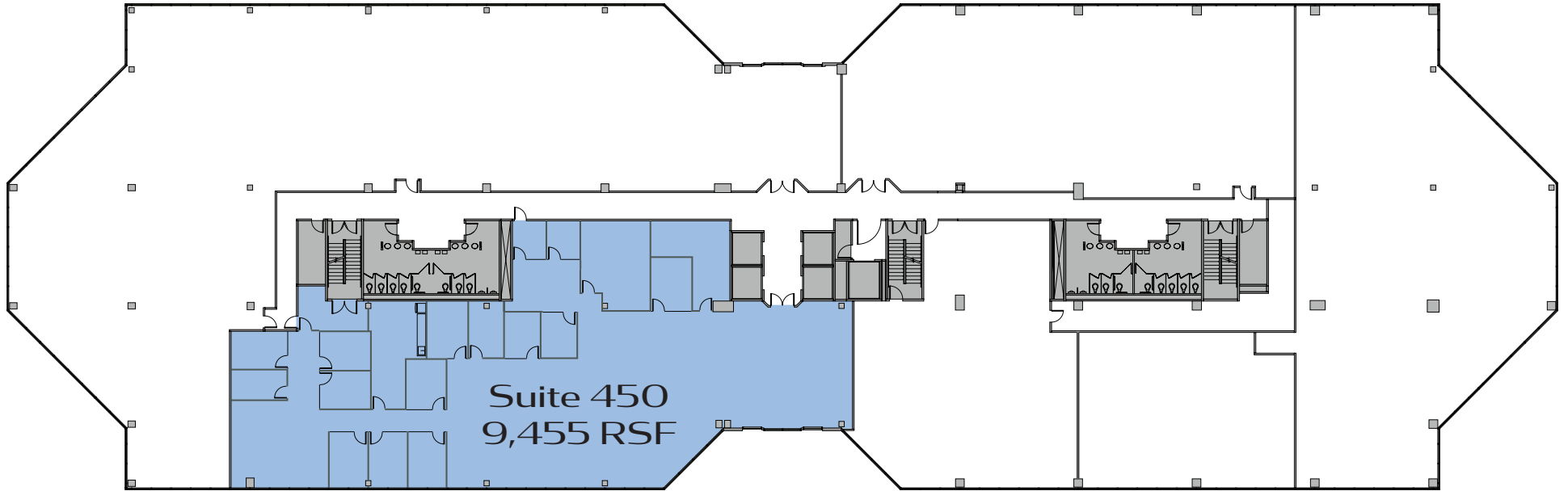
© 2025 CBRE, Inc. All rights reserved. This information has been obtained from sources believed reliable but has not been verified for accuracy or completeness. CBRE, Inc. makes no guarantee, representation or warranty and accepts no responsibility or liability as to the accuracy, completeness, or reliability of the information contained herein. You should conduct a careful, independent investigation of the property and verify all information. Any reliance on this information is solely at your own risk. CBRE and the CBRE logo are service marks of CBRE, Inc. All other marks displayed on this document are the property of their respective owners, and the use of such marks does not imply any affiliation with or endorsement of CBRE. Photos herein are the property of their respective owners. Use of these images without the express written consent of the owner is prohibited.

MAGUIRE
HAYDEN
REAL ESTATE COMPANY

CBRE

300 FOUR FALLS

WEST CONSHOHOCKEN, PA



FOURTH FLOOR

9,455 RSF

AVAILABLE NOW

Stephen J. Gersbach
First Vice President
+1 610 251 5138
steve.gersbach@cbre.com

Scott Gabrielsen
Executive Vice President
+1 610 308 5141
scott.gabrielsen@cbre.com

Nicholas J. Gersbach
Senior Vice President
+1 215 561 8945
nick.gersbach@cbre.com

CBRE, Inc., 555 E. Lancaster Avenue, Suite 120, Radnor, PA 19087 | cbre.us/philadelphia | Licensed Real Estate Broker

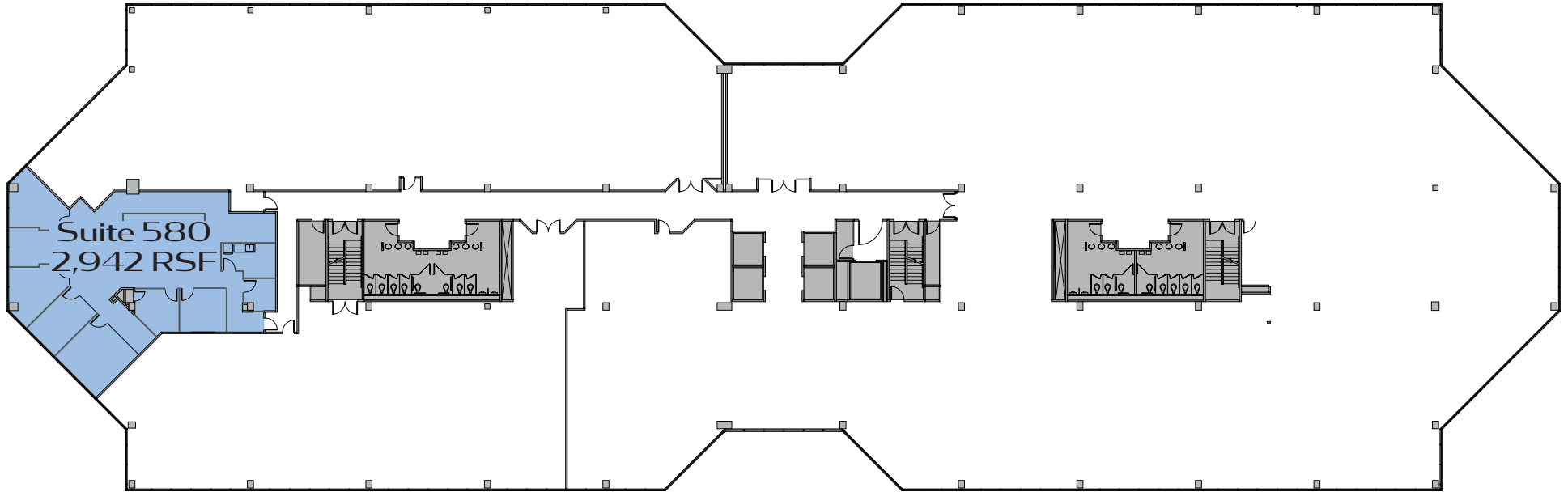
© 2025 CBRE, Inc. All rights reserved. This information has been obtained from sources believed reliable but has not been verified for accuracy or completeness. CBRE, Inc. makes no guarantee, representation or warranty and accepts no responsibility or liability as to the accuracy, completeness, or reliability of the information contained herein. You should conduct a careful, independent investigation of the property and verify all information. Any reliance on this information is solely at your own risk. CBRE and the CBRE logo are service marks of CBRE, Inc. All other marks displayed on this document are the property of their respective owners, and the use of such marks does not imply any affiliation with or endorsement of CBRE. Photos herein are the property of their respective owners. Use of these images without the express written consent of the owner is prohibited.

MAGUIRE
HAYDEN
REAL ESTATE COMPANY

CBRE

300 FOUR FALLS

WEST CONSHOHOCKEN, PA



FIFTH FLOOR

2,942 RSF

AVAILABLE NOW

Stephen J. Gersbach
First Vice President
+1 610 251 5138
steve.gersbach@cbre.com

Scott Gabrielsen
Executive Vice President
+1 610 308 5141
scott.gabrielsen@cbre.com

Nicholas J. Gersbach
Senior Vice President
+1 215 561 8945
nick.gersbach@cbre.com

CBRE, Inc., 555 E. Lancaster Avenue, Suite 120, Radnor, PA 19087 | cbre.us/philadelphia | Licensed Real Estate Broker

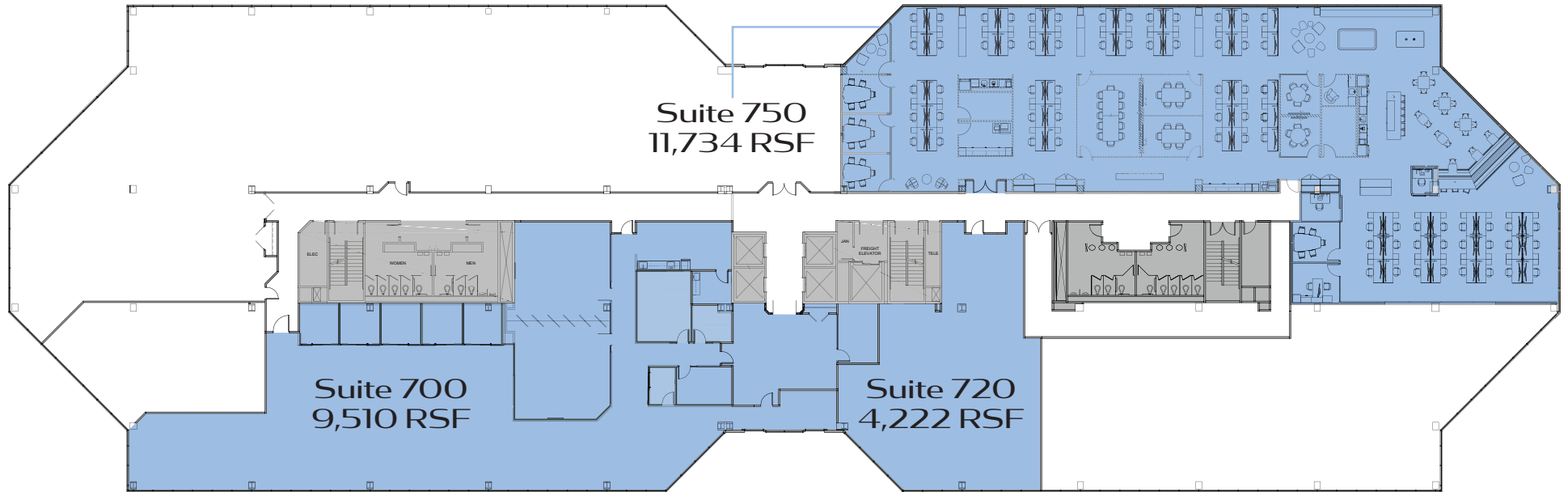
© 2025 CBRE, Inc. All rights reserved. This information has been obtained from sources believed reliable but has not been verified for accuracy or completeness. CBRE, Inc. makes no guarantee, representation or warranty and accepts no responsibility or liability as to the accuracy, completeness, or reliability of the information contained herein. You should conduct a careful, independent investigation of the property and verify all information. Any reliance on this information is solely at your own risk. CBRE and the CBRE logo are service marks of CBRE, Inc. All other marks displayed on this document are the property of their respective owners, and the use of such marks does not imply any affiliation with or endorsement of CBRE. Photos herein are the property of their respective owners. Use of these images without the express written consent of the owner is prohibited.

MAGUIRE
HAYDEN
REAL ESTATE COMPANY

CBRE

300 FOUR FALLS

WEST CONSHOHOCKEN, PA



SEVENTH FLOOR

13,732 RSF (Divisible)
11,734 RSF

AVAILABLE NOW

Stephen J. Gersbach
First Vice President
+1 610 251 5138
steve.gersbach@cbre.com

Scott Gabrielsen
Executive Vice President
+1 610 308 5141
scott.gabrielsen@cbre.com

Nicholas J. Gersbach
Senior Vice President
+1 215 561 8945
nick.gersbach@cbre.com

CBRE, Inc., 555 E. Lancaster Avenue, Suite 120, Radnor, PA 19087 | cbre.us/philadelphia | Licensed Real Estate Broker

© 2025 CBRE, Inc. All rights reserved. This information has been obtained from sources believed reliable but has not been verified for accuracy or completeness. CBRE, Inc. makes no guarantee, representation or warranty and accepts no responsibility or liability as to the accuracy, completeness, or reliability of the information contained herein. You should conduct a careful, independent investigation of the property and verify all information. Any reliance on this information is solely at your own risk. CBRE and the CBRE logo are service marks of CBRE, Inc. All other marks displayed on this document are the property of their respective owners, and the use of such marks does not imply any affiliation with or endorsement of CBRE. Photos herein are the property of their respective owners. Use of these images without the express written consent of the owner is prohibited.

MAGUIRE
HAYDEN
REAL ESTATE COMPANY

CBRE